

SPECIALISTS IN EMERGENCY LIGHTING AND CENTRAL POWER SYSTEMS



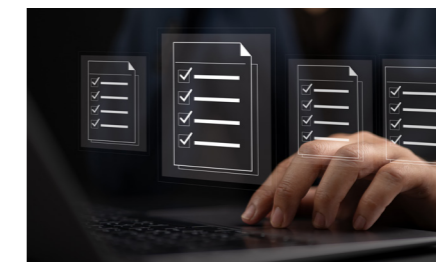
DOWNLOAD ALL
DATA SHEETS HERE



PRODUCT CATALOGUE 2025



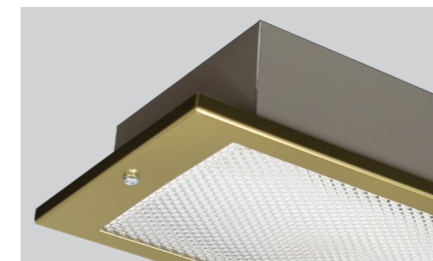
DEDICATED
SUPPORT TEAM



ADVICE TO STAY
COMPLIANT



ON-SITE UK
MANUFACTURING



FROM LEGACY
RETRO-FIT PRODUCTS...



...TO FULL
CENTRAL SYSTEMS



HERE SINCE
1968



BLE LIGHTING & POWER LTD

Unit 3, Drake Business Park, Drake House Crescent, Sheffield S20 7HT
Tel: 01246 432325 • Email: sales@blelighting.co.uk • www.blelighting.co.uk

Tel: 01246 432325 Email: sales@blelighting.co.uk www.blelighting.co.uk

CONTENTS

PAGE

EMERGENCY LIGHTING	PAGE 4-8
ESCAPE ROUTE LIGHTING	PAGE 9-12
DALI RANGE EMERGENCY LIGHTING	PAGE 13
AMENITY LIGHTING	PAGE 14-17
LINEAR FITTINGS	PAGE 18
COMMERCIAL LIGHTING	PAGE 19
POWER SYSTEMS	PAGE 20-22
BATTERIES & ACCESSORIES	PAGE 23-24
POWER SYSTEM ACCESSORIES	PAGE 25
UNINTERRUPTIBLE POWER SUPPLY & ELECTRIC CAR CHARGERS	PAGE 26

ICON GUIDE

BATTERY WARRANTY	PRODUCT WARRANTY	IP RATING	IK RATING	LIFETIME HOURS	SELECTABLE COLOUR TEMP	COLOUR TEMPERATURE
BEAM ANGLE	CUT OUT DIAMETER	WATTAGE SELECTABLE	MICROWAVE SENSOR	DUSK TO DAWN SENSOR (PHOTOCELL)	STEP DIM MICROWAVE SENSOR	UNIFIED GLARE RATING
CENTRAL BATTERY SYSTEM LUMINAIRE	EMERGENCY LUMINAIRE	LiFePO4 BATTERY	SELF TEST LUMINAIRE	DALI LUMINAIRE		

E&OE • PRODUCT INFORMATION MAY CHANGE WITHOUT PRIOR NOTICE



At BLE we pride ourselves on delivering high-quality lighting solutions that stand the test of time. That's why we're excited to launch our reyt good 10 year warranty on all our Made in Britain lighting products.



MILLHOUSES

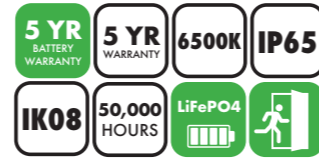
EMERGENCY BULKHEAD



CODE	DESCRIPTION	FEATURES	BOX QTY
EL-115001	MILLHOUSES Emergency Bulkhead - IP65 - Maintained/Non-maintained - LiFePO4	<ul style="list-style-type: none"> • Easy install hinged gear tray • Traditional design • Ideal for retrofit applications • High performance diffuser • Covers the smaller footprint of previous bulkheads 	5
EL-115001-24	MILLHOUSES Emergency Bulkhead - IP65 - 24V Slave		5
EL-115001-48	MILLHOUSES Emergency Bulkhead - IP65 - 48V Slave		5
EL-115001-110	MILLHOUSES Emergency Bulkhead - IP65 - 110V Slave		5
EL-115001-230	MILLHOUSES Emergency Bulkhead - IP65 - 230V Slave		5
EL-115001-DL	MILLHOUSES Emergency Bulkhead - IP65 - LiFePO4 - DALI		5
EL-115050	MILLHOUSES High Output Emergency Bulkhead - IP65 - LiFePO4 (930lm)		5

NORFOLK

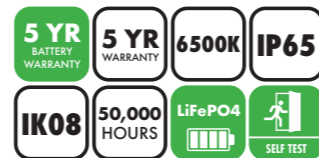
EMERGENCY BULKHEAD



CODE	DESCRIPTION	FEATURES	BOX QTY
EL-110150	NORFOLK Emergency Bulkhead - IP65 - Maintained/Non-maintained - LiFePO4	<ul style="list-style-type: none"> • Hinged gear tray • Ideal for retrofit applications • Supplied with self adhesive ISO 7010 exit legend pack 	12

CROOKSMOOR

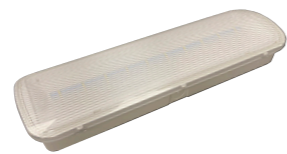
EMERGENCY BULKHEAD WITH SELF TEST



CODE	DESCRIPTION	FEATURES	BOX QTY
EL-110250	CROOKSMOOR Emergency Bulkhead - IP65 - Maintained/Non-maintained - LiFePO4 - Self Test	<ul style="list-style-type: none"> • Easy install hinged gear tray • Traditional design • Self test as standard 	12

RUSKIN

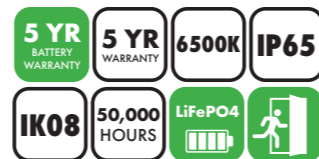
EMERGENCY BULKHEAD



CODE	DESCRIPTION	FEATURES	BOX QTY
EL-112951	RUSKIN Emergency Bulkhead - IP65 - Maintained/Non-maintained - LiFePO4	<ul style="list-style-type: none"> • Hinged gear tray • Low profile • Push fit terminals • No visible fixings • Supplied with ISO legend sticker 	20

FOXHILL

HIGH OUTPUT EMERGENCY BULKHEAD



CODE	DESCRIPTION	FEATURES	BOX QTY
EL-114850	FOXHILL Emergency Bulkhead High Output - 1000/1500lm - IP65 - Non-maintained - LiFePO4	<ul style="list-style-type: none"> • Suitable for high level mounting applications • Ideal for use in high risk task areas • Built in easy-fit gear tray 	10

ACCESSORIES

DARNALL BULKHEAD ACCESSORIES



- Legends for use with NORFOLK and CROOKSMOOR Emergency Bulkheads

CODE	DESCRIPTION	FEATURES	BOX QTY
EL-194503	DARNALL Self Adhesive Exit Legend Kit - BS EN ISO7010 Format - 20M Viewing Distance	<ul style="list-style-type: none"> • Exit legends and recessing kit for use with NORFOLK and CROOKSMOOR Emergency Bulkheads 	12
EL-194501	DARNALL Self Adhesive Exit Legend Kit - BS EN ISO7010 Format - 19M Viewing Distance		12
EL-194504	DARNALL Semi Recessing Kit For NORFOLK & CROOKSMOOR Bulkheads		12

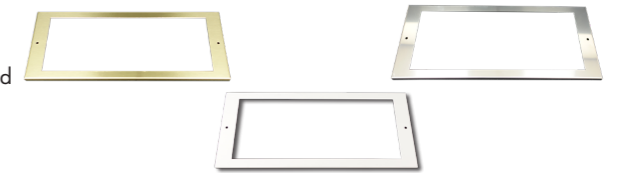
MILLHOUSES EXIT LEGENDS



- Self adhesive legends for use with the MILLHOUSES Bulkhead

CODE	DESCRIPTION	FEATURES	BOX QTY
EL-115002-UP	MILLHOUSES Up Legend	<ul style="list-style-type: none"> • Self adhesive legends for use with the MILLHOUSES Bulkhead 	5
EL-115002-DO	MILLHOUSES Down Legend		5
EL-115002-L	MILLHOUSES Left Legend		5
EL-115002-R	MILLHOUSES Right Legend		5

HOLLINSEND BULKHEAD ACCESSORIES



- Diffusers and recessing plates for use with the HOLLINSEND Recessed Bulkhead

CODE	DESCRIPTION	FEATURES	BOX QTY
EL-110410-OP	HOLLINSEND Opal Diffuser - MIB	<ul style="list-style-type: none"> • High quality Opal and Prismatic Diffusers for use with the HOLLINSEND Recessed Bulkhead • Recessing / Bezel Plates for use with the HOLLINSEND Recessed Bulkhead 	5
EL-110410-PR	HOLLINSEND Prismatic Diffuser - MIB		5
EL-110411-BR	HOLLINSEND Recessing Plate/Bezel - Brass - MIB		5
EL-110411-CH	HOLLINSEND Recessing Plate/Bezel - Chrome - MIB		5
EL-110411-WH	HOLLINSEND Recessing Plate/Bezel - White - MIB		5
EL-110411-BL	HOLLINSEND Recessing Plate/Bezel - Black - MIB		5

MOUNT LED BACK BOX

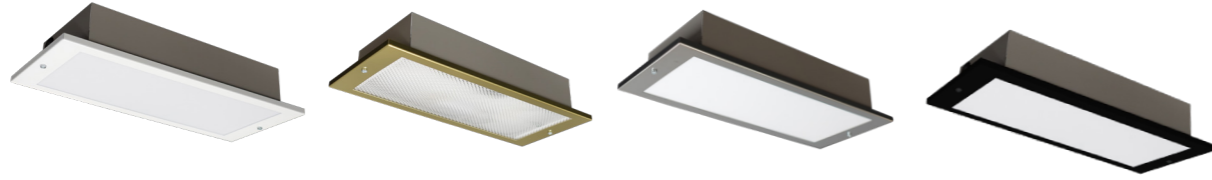


- Back Box for HOLLINSEND and PARKWOOD

CODE	DESCRIPTION	FEATURES	BOX QTY
EL-194301	MOUNT Back Box - Maintained/Non-Maintained - LiFePO4 Battery - MIB	<ul style="list-style-type: none"> • LED Back Box for Recessed Fittings HOLLINSEND and PARKWOOD • Fully recessed design • Metal ceiling box assembly 	5
EL-194303	MOUNT Back Box - Maintained/Non-Maintained - LiFePO4 Battery - Self Test - MIB		5
EL-194302-24	MOUNT Back Box - Slave - 24V - MIB		5
EL-194302-50	MOUNT Back Box - Slave - 50V - MIB		5
EL-194302-110	MOUNT Back Box - Slave - 110V - MIB		5
EL-194302-230	MOUNT Back Box - Slave - 230V - MIB		5

HOLLINSEND

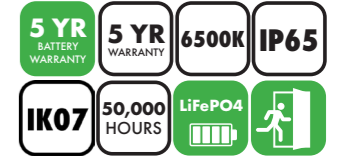
RECESSED EMERGENCY BULKHEAD



CODE	DESCRIPTION	FEATURES	BOX QTY
EL-110404-BR	HOLLINSEND Maintained/Non-maintained - LiFePO4 - Brass - Prismatic Diffuser - MIB	<p style="border: 1px solid yellow; border-radius: 50%; padding: 5px; display: inline-block;">DALI Versions Available Ask For Full Details</p> <ul style="list-style-type: none"> • Fully recessed design • Metal ceiling box assembly • Dual circuit technology • Chrome, white, black or brass finish as standard, or select any RAL colour. • High quality opal or prismatic diffuser • Brass, Chrome, White and Black recessing plate / bezel 	5
EL-110404-CH	HOLLINSEND Maintained/Non-maintained - LiFePO4 - Chrome - Prismatic Diffuser - MIB		5
EL-110404-WH	HOLLINSEND Maintained/Non-maintained - LiFePO4 - White - Prismatic Diffuser - MIB		5
EL-110404-BL	HOLLINSEND Maintained/Non-maintained - LiFePO4 - Black - Prismatic Diffuser - MIB		5
EL-110402-BR	HOLLINSEND Maintained/Non-maintained - LiFePO4 - Brass - Prismatic Diffuser - Self Test - MIB		5
EL-110402-CH	HOLLINSEND Maintained/Non-maintained - LiFePO4 - Chrome - Prismatic Diffuser - Self Test - MIB		5
EL-110402-WH	HOLLINSEND Maintained/Non-maintained - LiFePO4 - White - Prismatic Diffuser - Self Test - MIB		5
EL-110402-BL	HOLLINSEND Maintained/Non-maintained - LiFePO4 - Black - Prismatic Diffuser - Self Test - MIB		5
EL-110408-BR	HOLLINSEND Maintained/Non-maintained - LiFePO4 - Brass - Opal Diffuser - MIB		5
EL-110408-CH	HOLLINSEND Maintained/Non-maintained - LiFePO4 - Chrome - Opal Diffuser - MIB		5
EL-110408-WH	HOLLINSEND Maintained/Non-maintained - LiFePO4 - White - Opal Diffuser - MIB		5
EL-110408-BL	HOLLINSEND Maintained/Non-maintained - LiFePO4 - Black - Opal Diffuser - MIB		5
EL-110403-BR	HOLLINSEND Maintained/Non-maintained - LiFePO4 - Brass - Opal Diffuser - Self Test - MIB		5
EL-110403-CH	HOLLINSEND Maintained/Non-maintained - LiFePO4 - Chrome - Opal Diffuser - Self Test - MIB		5
EL-110403-WH	HOLLINSEND Maintained/Non-maintained - LiFePO4 - White - Opal Diffuser - Self Test - MIB		5
EL-110403-BL	HOLLINSEND Maintained/Non-maintained - LiFePO4 - Black - Opal Diffuser - Self Test - MIB		5
EL-110406-BR-24	HOLLINSEND Slave - Brass - Prismatic Diffuser - 24V - MIB		5
EL-110406-BR-50	HOLLINSEND Slave - Brass - Prismatic Diffuser - 50V - MIB		5
EL-110406-BR-110	HOLLINSEND Slave - Brass - Prismatic Diffuser - 110V - MIB		5
EL-110406-BR-230	HOLLINSEND Slave - Brass - Prismatic Diffuser - 230V - MIB		5
EL-110406-CH-24	HOLLINSEND Slave - Chrome - Prismatic Diffuser - 24V - MIB		5
EL-110406-CH-50	HOLLINSEND Slave - Chrome - Prismatic Diffuser - 50V - MIB		5
EL-110406-CH-110	HOLLINSEND Slave - Chrome - Prismatic Diffuser - 110V - MIB		5
EL-110406-CH-230	HOLLINSEND Slave - Chrome - Prismatic Diffuser - 230V - MIB		5
EL-110406-WH-24	HOLLINSEND Slave - White - Prismatic Diffuser - 24V - MIB		5
EL-110406-WH-50	HOLLINSEND Slave - White - Prismatic Diffuser - 50V - MIB		5
EL-110406-WH-110	HOLLINSEND Slave - White - Prismatic Diffuser - 110V - MIB		5
EL-110406-WH-230	HOLLINSEND Slave - White - Prismatic Diffuser - 230V - MIB		5
EL-110406-BL-24	HOLLINSEND Slave - Black - Prismatic Diffuser - 24V - MIB		5
EL-110406-BL-50	HOLLINSEND Slave - Black - Prismatic Diffuser - 50V - MIB		5
EL-110406-BL-110	HOLLINSEND Slave - Black - Prismatic Diffuser - 110V - MIB		5
EL-110406-BL-230	HOLLINSEND Slave - Black - Prismatic Diffuser - 230V - MIB		5
EL-110407-BR-24	HOLLINSEND Slave - Brass - Opal Diffuser - 24V - MIB		5
EL-110407-BR-50	HOLLINSEND Slave - Brass - Opal Diffuser - 50V - MIB		5
EL-110407-BR-110	HOLLINSEND Slave - Brass - Opal Diffuser - 110V - MIB		5
EL-110407-BR-230	HOLLINSEND Slave - Brass - Opal Diffuser - 230V - MIB		5
EL-110407-CH-24	HOLLINSEND Slave - Chrome - Opal Diffuser - 24V - MIB		5
EL-110407-CH-50	HOLLINSEND Slave - Chrome - Opal Diffuser - 50V - MIB		5
EL-110407-CH-110	HOLLINSEND Slave - Chrome - Opal Diffuser - 110V - MIB		5
EL-110407-CH-230	HOLLINSEND Slave - Chrome - Opal Diffuser - 230V - MIB		5
EL-110407-WH-24	HOLLINSEND Slave - White - Opal Diffuser - 24V - MIB	5	
EL-110407-WH-50	HOLLINSEND Slave - White - Opal Diffuser - 50V - MIB	5	
EL-110407-WH-110	HOLLINSEND Slave - White - Opal Diffuser - 110V - MIB	5	
EL-110407-WH-230	HOLLINSEND Slave - White - Opal Diffuser - 230V - MIB	5	
EL-110407-BL-24	HOLLINSEND Slave - Black - Opal Diffuser - 24V - MIB	5	
EL-110407-BL-50	HOLLINSEND Slave - Black - Opal Diffuser - 50V - MIB	5	
EL-110407-BL-110	HOLLINSEND Slave - Black - Opal Diffuser - 110V - MIB	5	
EL-110407-BL-230	HOLLINSEND Slave - Black - Opal Diffuser - 230V - MIB	5	

DEVONSHIRE

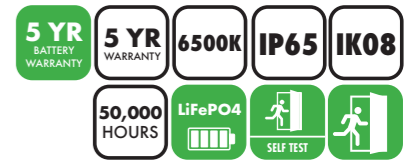
EMERGENCY TWIN SPOT



CODE	DESCRIPTION	FEATURES	BOX QTY
EL-142151	DEVONSHIRE LED Emergency Twin Spot - 4W - IP65 - LiFePO4 - NEW	<ul style="list-style-type: none"> • Easy installation • Adjustable lamp heads • Compact design 	9

STANNINGTON

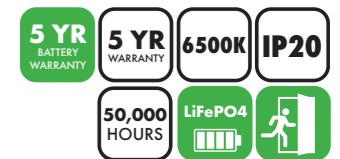
EMERGENCY TWIN SPOT WITH SELF TEST



CODE	DESCRIPTION	FEATURES	BOX QTY
EL-142251	STANNINGTON LED Emergency Twin Spot - 3W - IP65 - LiFePO4 - Self Test - NEW	<ul style="list-style-type: none"> • Adjustable lamp heads • Lightweight fitting for easy installation • Self test as standard 	10

HEELEY

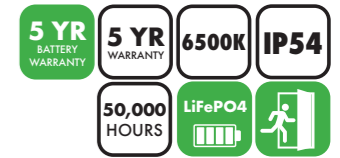
EMERGENCY DOWNLIGHT



CODE	DESCRIPTION	FEATURES	BOX QTY
EL-153151	HEELEY LED Emergency Downlight - IP20 - Non-maintained - LiFePO4 - Dia 98mm - NEW	<ul style="list-style-type: none"> • Replaceable lens - open area or corridor lens • Surface or recessed mount • Compact size • Convenient and time saving installation 	75

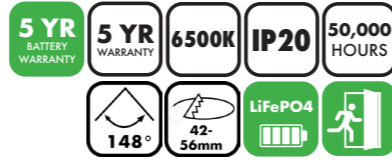
HEELEY SQUARE

EMERGENCY DOWNLIGHT



CODE	DESCRIPTION	FEATURES	BOX QTY
EL-153152	HEELEY SQUARE LED Emergency Downlight - IP54 - Non-maintained - LiFePO4 - 130 x 130mm - NEW	<ul style="list-style-type: none"> • Surface mount • Compact size • Convenient and time saving installation 	40

KIRKSTONE EMERGENCY DOWNLIGHT



CODE	DESCRIPTION	FEATURES	BOX QTY
EL-155350	KIRKSTONE LED Emergency Downlight - IP20 - Non-maintained - LiFePO4 - Dia 61mm - NEW	<ul style="list-style-type: none"> Pivoted design for restricted height applications Integrated LiFePO4 battery pack with easy access for replacement Open area or corridor function lens 	40

THORNCLIFFE EMERGENCY EXIT BOX



CODE	DESCRIPTION	FEATURES	BOX QTY
EL-131350	THORNCLIFFE LED Emergency Exit Box - ISO Format Legend - LiFePO4 - Self Test	<ul style="list-style-type: none"> Highly energy efficient Low power consumption Supplied with ISO7010 format legend Traditional design 	6
EL-131351	THORNCLIFFE LED Emergency Exit Box - ISO Format Legend - LiFePO4		6
EL-131303-24	THORNCLIFFE LED Emergency Exit Box - Slave - ISO Format Legend - 24V		6
EL-131303-50	THORNCLIFFE LED Emergency Exit Box - Slave - ISO Format Legend - 50V		6
EL-131303-110	THORNCLIFFE LED Emergency Exit Box - Slave - ISO Format Legend - 110V		6
EL-131303-230	THORNCLIFFE LED Emergency Exit Box - Slave - ISO Format Legend - 230V		6

FIRTH SLIMLINE EMERGENCY EXIT BOX WITH SELF TEST



CODE	DESCRIPTION	FEATURES	BOX QTY
EL-131250	FIRTH Emergency Exit Box - Slimline - ISO Legend - LiFePO4 - Self Test	<ul style="list-style-type: none"> Highly energy efficient Modern and slimline design Supplied with ISO7010 format legend. 	10

WESTON EMERGENCY EXIT SIGN WITH SELF TEST



CODE	DESCRIPTION	FEATURES	BOX QTY
EL-131850	WESTON Hanging Exit Sign - LiFePO4 - Self Test	<ul style="list-style-type: none"> Adjustable drop length - 1 metre max Supplied with ISO7010 format legend 	6

SYCAMORE EMERGENCY DOWNLIGHT WITH SELF TEST



CODE	DESCRIPTION	FEATURES	BOX QTY
EL-153051	SYCAMORE Emergency Downlight - IP20 - Non-maintained - LiFePO4 - Dia 58mm - NEW	<ul style="list-style-type: none"> Recessed mounting Supplied with white and black head Supplied with corridor and open area lens 	25

POINT OF SALE DISPLAY

ASK FOR DETAILS ON
OUR STOCKED
POINT OF SALE
DISPLAY BINS

01246 432325



BINGHAM

EMERGENCY HANGING EXIT SIGN

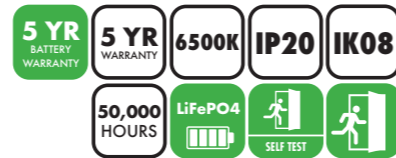


CODE	DESCRIPTION	FEATURES	BOX QTY
EL-132001-BL	BINGHAM Hanging Exit Sign - Including Arrow Legend - Black - LiFePO4 - MIB	<p style="text-align: center; border: 1px solid green; border-radius: 50%; padding: 5px;">DALI Versions Available Ask For Full Details</p> <ul style="list-style-type: none"> Adjustable drop length (250mm as standard) High quality engraved legend Chrome, white, black or brass finish as standard, or select any RAL colour 	5
EL-132001-BR	BINGHAM Hanging Exit Sign - Including Arrow Legend - Brass - LiFePO4 - MIB		5
EL-132001-CH	BINGHAM Hanging Exit Sign - Including Arrow Legend - Chrome - LiFePO4 - MIB		5
EL-132001-WH	BINGHAM Hanging Exit Sign - Including Arrow Legend - White - LiFePO4 - MIB		5
EL-132002-BL	BINGHAM Hanging Exit Sign - Including Arrow Legend - Black - LiFePO4 - Self Test - MIB		5
EL-132002-BR	BINGHAM Hanging Exit Sign - Including Arrow Legend - Brass - LiFePO4 - Self Test - MIB		5
EL-132002-CH	BINGHAM Hanging Exit Sign - Including Arrow Legend - Chrome - LiFePO4 - Self Test - MIB		5
EL-132002-WH	BINGHAM Hanging Exit Sign - Including Arrow Legend - White - LiFePO4 - Self Test - MIB		5
EL-132003-BL-24	BINGHAM Hanging Exit Sign - Slave - Including Arrow Legend - Black - LiFePO4 - 24V - MIB		5
EL-132003-BL-50	BINGHAM Hanging Exit Sign - Slave - Including Arrow Legend - Black - LiFePO4 - 50V - MIB		5
EL-132003-BL-110	BINGHAM Hanging Exit Sign - Slave - Including Arrow Legend - Black - LiFePO4 - 110V - MIB		5
EL-132003-BL-230	BINGHAM Hanging Exit Sign - Slave - Including Arrow Legend - Black - LiFePO4 - 230V - MIB		5
EL-132003-BR-24	BINGHAM Hanging Exit Sign - Slave - Including Arrow Legend - Brass - LiFePO4 - 24V - MIB		5
EL-132003-BR-50	BINGHAM Hanging Exit Sign - Slave - Including Arrow Legend - Brass - LiFePO4 - 50V - MIB		5
EL-132003-BR-110	BINGHAM Hanging Exit Sign - Slave - Including Arrow Legend - Brass - LiFePO4 - 110V - MIB		5
EL-132003-BR-230	BINGHAM Hanging Exit Sign - Slave - Including Arrow Legend - Brass - LiFePO4 - 230V - MIB		5
EL-132003-CH-24	BINGHAM Hanging Exit Sign - Slave - Including Arrow Legend - Chrome - LiFePO4 - 24V - MIB		5
EL-132003-CH-50	BINGHAM Hanging Exit Sign - Slave - Including Arrow Legend - Chrome - LiFePO4 - 50V - MIB		5
EL-132003-CH-110	BINGHAM Hanging Exit Sign - Slave - Including Arrow Legend - Chrome - LiFePO4 - 110V - MIB		5
EL-132003-CH-230	BINGHAM Hanging Exit Sign - Slave - Including Arrow Legend - Chrome - LiFePO4 - 230V - MIB		5
EL-132003-WH-24	BINGHAM Hanging Exit Sign - Slave - Including Arrow Legend - White - LiFePO4 - 24V - MIB		5
EL-132003-WH-50	BINGHAM Hanging Exit Sign - Slave - Including Arrow Legend - White - LiFePO4 - 50V - MIB		5
EL-132003-WH-110	BINGHAM Hanging Exit Sign - Slave - Including Arrow Legend - White - LiFePO4 - 110V - MIB		5
EL-132003-WH-230	BINGHAM Hanging Exit Sign - Slave - Including Arrow Legend - White - LiFePO4 - 230V - MIB		5

* Choose your legend at the point of order

MEERSBROOK

5 IN 1 EXIT SIGN WITH SELF TEST



CODE	DESCRIPTION	FEATURES	BOX QTY
EL-131950	MEERSBROOK 5 in 1 Hanging Exit Sign - LiFePO4 - Supplied with ISO Legend Pack - Self Test	<ul style="list-style-type: none"> Five mounting options supplied as standard Includes three kinds of brackets Lightweight and easy to install Adjustable hanging length - 1 metre as standard Supplied with ISO 7010 format exit legend pack Supplied with directional arrows and blank legend for all options of single or double sided signage 	6

PARKWOOD

EMERGENCY EXIT SIGN



CODE	DESCRIPTION	FEATURES	BOX QTY
EL-133804-BR	PARKWOOD Recessed Exit Sign - Including Arrow Legend - Brass - LiFePO4 - MIB	<p style="text-align: center; border: 1px solid green; border-radius: 50%; padding: 5px;">DALI Versions Available Ask For Full Details</p> <ul style="list-style-type: none"> Fully recessed design Metal ceiling box assembly Supplied with high quality engraved legend Chrome, white, black or brass finish as standard, or select any RAL colour Choose your legend at the point of order 	5
EL-133804-CH	PARKWOOD Recessed Exit Sign - Including Arrow Legend - Chrome - LiFePO4 - MIB		5
EL-133804-WH	PARKWOOD Recessed Exit Sign - Including Arrow Legend - White - LiFePO4 - MIB		5
EL-133804-BL	PARKWOOD Recessed Exit Sign - Including Arrow Legend - Black - LiFePO4 - MIB		5
EL-133807-BR	PARKWOOD Recessed Exit Sign - Including Arrow Legend - Brass - LiFePO4 - Self Test - MIB		5
EL-133807-CH	PARKWOOD Recessed Exit Sign - Including Arrow Legend - Chrome - LiFePO4 - Self Test - MIB		5
EL-133807-WH	PARKWOOD Recessed Exit Sign - Including Arrow Legend - White - LiFePO4 - Self Test - MIB		5
EL-133807-BL	PARKWOOD Recessed Exit Sign - Including Arrow Legend - Black - LiFePO4 - Self Test - MIB		5
EL-133805-BR-24	PARKWOOD Recessed Exit Sign - Slave - Including Arrow Legend - Brass - 24V - MIB		5
EL-133805-BR-50	PARKWOOD Recessed Exit Sign - Slave - Including Arrow Legend - Brass - 50V - MIB		5
EL-133805-BR-110	PARKWOOD Recessed Exit Sign - Slave - Including Arrow Legend - Brass - 110V - MIB		5
EL-133805-BR-230	PARKWOOD Recessed Exit Sign - Slave - Including Arrow Legend - Brass - 230V - MIB		5
EL-133805-CH-24	PARKWOOD Recessed Exit Sign - Slave - Including Arrow Legend - Chrome - 24V - MIB		5
EL-133805-CH-50	PARKWOOD Recessed Exit Sign - Slave - Including Arrow Legend - Chrome - 50V - MIB		5
EL-133805-CH-110	PARKWOOD Recessed Exit Sign - Slave - Including Arrow Legend - Chrome - 110V - MIB		5
EL-133805-CH-230	PARKWOOD Recessed Exit Sign - Slave - Including Arrow Legend - Chrome - 230V - MIB		5
EL-133805-WH-24	PARKWOOD Recessed Exit Sign - Slave - Including Arrow Legend - White - 24V - MIB		5
EL-133805-WH-50	PARKWOOD Recessed Exit Sign - Slave - Including Arrow Legend - White - 50V - MIB		5
EL-133805-WH-110	PARKWOOD Recessed Exit Sign - Slave - Including Arrow Legend - White - 110V - MIB		5
EL-133805-WH-230	PARKWOOD Recessed Exit Sign - Slave - Including Arrow Legend - White - 230V - MIB		5
EL-133805-BL-24	PARKWOOD Recessed Exit Sign - Slave - Including Arrow Legend - Black - 24V - MIB		5
EL-133805-BL-50	PARKWOOD Recessed Exit Sign - Slave - Including Arrow Legend - Black - 50V - MIB		5
EL-133805-BL-110	PARKWOOD Recessed Exit Sign - Slave - Including Arrow Legend - Black - 110V - MIB		5
EL-133805-BL-230	PARKWOOD Recessed Exit Sign - Slave - Including Arrow Legend - Black - 230V - MIB		5

ACCESSORIES

EMERGENCY EXIT SIGNS

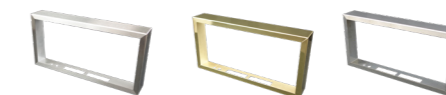
THORNCLIFFE EXIT LEGENDS



• For use with the THORNCLIFFE Exit Box

CODE	DESCRIPTION	FEATURES	BOX QTY
EL-131305-DO	THORNCLIFFE Exit Legend - European Signs Directive Format - Down	<ul style="list-style-type: none"> Exit legends for use with the THORNCLIFFE Exit Box European Signs Directive Format or ISO 7010 Format 	6
EL-131305-LR	THORNCLIFFE Exit Legend - European Signs Directive Format - Left/Right		6
EL-131305-UP	THORNCLIFFE Exit Legend - European Signs Directive Format - Up		6
EL-131306-DO	THORNCLIFFE Exit Legend - BS EN ISO7010 Format - Down		6
EL-131306-LR	THORNCLIFFE Exit Legend - BS EN ISO7010 Format - Left/Right		6
EL-131306-UP	THORNCLIFFE Exit Legend - BS EN ISO7010 Format - Up		6

THORNCLIFFE BEZELS



• For use with the THORNCLIFFE Exit Box

CODE	DESCRIPTION	FEATURES	BOX QTY
EL-131304-BC	THORNCLIFFE Brushed Chrome Bezel	<ul style="list-style-type: none"> Metal bezels for use with the THORNCLIFFE Exit Box 	6
EL-131304-BR	THORNCLIFFE Brass Bezel		6
EL-131304-CH	THORNCLIFFE Chrome Bezel		6

ACCESSORIES

EMERGENCY EXIT SIGNS

FIRTH EXIT LEGENDS



- For use with the **FIRTH** Slimline Exit Box

CODE	DESCRIPTION	FEATURES	BOX QTY
EL-131203-L	FIRTH Exit Legend - BS EN ISO7010 Format - Left	<ul style="list-style-type: none"> • For use with the FIRTH Slimline Exit Box • ISO 7010 Format 	10
EL-131203-R	FIRTH Exit Legend - BS EN ISO7010 Format - Right		10
EL-131203-UP	FIRTH Exit Legend - BS EN ISO7010 Format - Up		10

WESTON EXIT LEGENDS

- For use with the **WESTON** Exit Sign



CODE	DESCRIPTION	FEATURES	BOX QTY
EL-131802-DO	WESTON Exit Legend - BS EN ISO7010 Format - Down	<ul style="list-style-type: none"> • For use with the WESTON Exit Sign • European Signs Directive Format or ISO 7010 Format 	6
EL-131802-LR	WESTON Exit Legend - BS EN ISO7010 Format - Left/Right		6
EL-131803-LR	WESTON Exit Legend - European Signs Directive Format - Left/Right		6
EL-131803-UP	WESTON Exit Legend - European Signs Directive Format - Up		6

WOODHOUSE EXIT LEGENDS

- For use with the **BINGHAM** and **PARKWOOD** Exit Signs



CODE	DESCRIPTION	FEATURES	BOX QTY
EL-194404-DO	WOODHOUSE Exit Legend - European Signs Directive Format - Down	<ul style="list-style-type: none"> • For use with the BINGHAM and PARKWOOD Exit Signs • European Signs Directive Format or ISO 7010 Format • High quality engraved legend 	5
EL-194404-LR	WOODHOUSE Exit Legend - European Signs Directive Format - Left/Right		5
EL-194404-UP	WOODHOUSE Exit Legend - European Signs Directive Format - Up		5
EL-194405-DO	WOODHOUSE Exit Legend - BS EN ISO7010 Format - Down		5
EL-194405-LR	WOODHOUSE Exit Legend - BS EN ISO7010 Format - Left/Right		5
EL-194405-UP	WOODHOUSE Exit Legend - BS EN ISO7010 Format - Up		5

MOUNT LED BACK BOX

- Back Box for **HOLLINSEND** and **PARKWOOD**



CODE	DESCRIPTION	FEATURES	BOX QTY
EL-194301	MOUNT Back Box - Maintained/Non-Maintained - LiFePO4 - MIB	<ul style="list-style-type: none"> • LED Back Box for Recessed Fittings HOLLINSEND and PARKWOOD • Fully recessed design • Metal ceiling box assembly 	5
EL-194303	MOUNT Back Box - Maintained/Non-Maintained - LiFePO4 - Self Test - MIB		5
EL-194302-24	MOUNT Back Box - Slave - Maintained/Non-Maintained - 24V - MIB		5
EL-194302-50	MOUNT Back Box - Slave - Maintained/Non-Maintained - 50V - MIB		5
EL-194302-110	MOUNT Back Box - Slave - Maintained/Non-Maintained - 110V - MIB		5
EL-194302-230	MOUNT Back Box - Slave - Maintained/Non-Maintained - 230V - MIB		5

PARKWOOD RECESSING BEZELS

- For use with the **PARKWOOD** Exit Sign



CODE	DESCRIPTION	FEATURES	BOX QTY
EL-133809-BL	PARKWOOD Recessing Bezel - Black	<ul style="list-style-type: none"> • Recessing Bezels for use with the PARKWOOD Exit Sign 	5
EL-133809-BR	PARKWOOD Recessing Bezel - Brass		5
EL-133809-CH	PARKWOOD Recessing Bezel - Chrome		5
EL-133809-WH	PARKWOOD Recessing Bezel - White		5

RIVELIN DALI

EMERGENCY BULKHEAD



CODE	DESCRIPTION	FEATURES
EL-115950-DL	RIVELIN DALI Emergency Bulkhead - IP65 - Maintained/Non-maintained - LiFePO4 - 6W	<ul style="list-style-type: none"> • Surface mount • Dali • ISO 7010 format adhesive exit legend sticker with multi-directional arrow
EL-115951-DL	RIVELIN DALI Emergency Bulkhead - IP65 - Maintained/Non-maintained - LiFePO4 - 14W	

KELHAM DALI

EMERGENCY TWIN SPOT



CODE	DESCRIPTION	FEATURES
EL-145850-DL	KELHAM DALI Emergency Twin Spot - IP65 - Non-maintained - LiFePO4 - 9W	<ul style="list-style-type: none"> • High output 1200lm • Adjustable heads • Polycarbonate construction • Dali

HEATHLANDS DALI

EMERGENCY DOWNLIGHT



CODE	DESCRIPTION	FEATURES
EL-154250-DL	HEATHLANDS DALI Emergency Downlight - IP20 - Non-maintained - LiFePO4 - 3.5W	<ul style="list-style-type: none"> • Outer ring supplied for use with larger cut outs • Open area and corridor function lens • Dali

TOTLEY DALI

EMERGENCY DOWNLIGHT



CODE	DESCRIPTION	FEATURES
EL-155750-DL	TOTLEY DALI Emergency Downlight - IP20 - Non-maintained - LiFePO4 - 6W	<ul style="list-style-type: none"> • Recessed / Surface mount • Detachable surface mount box • Open area and corridor function lens • Dali
EL-155750-DL	TOTLEY DALI Emergency Downlight - IP20 - Non-maintained - LiFePO4 - 3.5W	

TUNWELL DALI

EMERGENCY EXIT SIGN



CODE	DESCRIPTION	FEATURES
EL-134050-DL	TUNWELL DALI Emergency Exit Sign - IP20 - Maintained/Non-maintained - LiFePO4 - 2-5W	<ul style="list-style-type: none"> • Supplied with ISO 7010 format exit legend • Wall mount • Polycarbonate construction • Dali

PARSON DALI

MULTI-INSTALLATION EMERGENCY EXIT SIGN



CODE	DESCRIPTION	FEATURES
EL-134150-DL	PARSON DALI Emergency Exit Sign - IP20 - Maintained/Non-maintained - LiFePO4 - 3W	<ul style="list-style-type: none"> • Wall / ceiling mount • Polycarbonate construction • Multi-position • Dali

CHELSEA LOW PROFILE AMENITY LIGHT



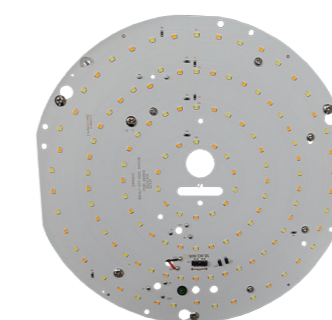
CODE	DESCRIPTION	FEATURES	BOX QTY
EL-121004-BR	CHELSEA Circular Amenity Light - IP20 - Opal Diffuser - Brass - 230V - 3CCT - MIB	<p>DAI Versions Available Ask For Full Details</p> <ul style="list-style-type: none"> Reduced power consumption Surface mounted Impact modified polycarbonate opal diffuser High quality metal housing Microwave sensor version available Emergency version available Chrome, white, black or brass as standard or select any RAL colour 	5
EL-121004-BR-MW	CHELSEA Circular Amenity Light - IP20 - Opal Diffuser - Brass - 230V - 3CCT - Microwave Sensor - MIB		5
EL-121004-BR-M3	CHELSEA Circular Amenity Light - IP20 - Opal Diffuser - Brass - LiFePO4 - 3CCT - MIB		5
EL-121004-BR-M3-MW	CHELSEA Circular Amenity Light - IP20 - Opal Diffuser - Brass - LiFePO4 - 3CCT - Microwave Sensor - MIB		5
EL-121004-CH	CHELSEA Circular Amenity Light - IP20 - Opal Diffuser - Chrome - 230V - 3CCT - MIB		5
EL-121004-CH-MW	CHELSEA Circular Amenity Light - IP20 - Opal Diffuser - Chrome - 230V - 3CCT - Microwave Sensor - MIB		5
EL-121004-CH-M3	CHELSEA Circular Amenity Light - IP20 - Opal Diffuser - Chrome - LiFePO4 - 3CCT - MIB		5
EL-121004-CH-M3-MW	CHELSEA Circular Amenity Light - IP20 - Opal Diffuser - Chrome - LiFePO4 - 3CCT - Microwave Sensor - MIB		5
EL-121004-WH	CHELSEA Circular Amenity Light - IP20 - Opal Diffuser - White - 230V - 3CCT - MIB		5
EL-121004-WH-MW	CHELSEA Circular Amenity Light - IP20 - Opal Diffuser - White - 230V - 3CCT - Microwave Sensor - MIB		5
EL-121004-WH-M3	CHELSEA Circular Amenity Light - IP20 - Opal Diffuser - White - LiFePO4 - 3CCT - MIB		5
EL-121004-WH-M3-MW	CHELSEA Circular Amenity Light - IP20 - Opal Diffuser - White - LiFePO4 - 3CCT - Microwave Sensor - MIB		5
EL-121004-BL	CHELSEA Circular Amenity Light - IP20 - Opal Diffuser - Black - 230V - 3CCT - MIB		5
EL-121004-BL-MW	CHELSEA Circular Amenity Light - IP20 - Opal Diffuser - Black - 230V - 3CCT - Microwave Sensor - MIB		5
EL-121004-BL-M3	CHELSEA Circular Amenity Light - IP20 - Opal Diffuser - Black - LiFePO4 - 3CCT - MIB		5
EL-121004-BL-M3-MW	CHELSEA Circular Amenity Light - IP20 - Opal Diffuser - Black - LiFePO4 - 3CCT - Microwave Sensor - MIB		5

OXLEY CIRCULAR AMENITY LIGHT



CODE	DESCRIPTION	FEATURES	BOX QTY
EL-120651	OXLEY Circular Amenity Light - 15W - IP54 - 3CCT - White - Opal Diffuser - 230V	<ul style="list-style-type: none"> Low power consumption Surface mounted Polycarbonate opal diffuser Microwave sensor version available Step dim microwave sensor version available Emergency version available 	10
EL-120651-MW	OXLEY Circular Amenity Light - 15W - IP54 - 3CCT - White - Opal Diffuser - 230V - Microwave Sensor		10
EL-120651-SD	OXLEY Circular Amenity Light - 15W - IP54 - 3CCT - White - Opal Diffuser - 230V - Step Dim Micro Sensor		10
EL-120651-M3	OXLEY Circular Amenity Light - 15W - IP54 - 3CCT - White - Opal Diffuser - LiFePO4		10
EL-120651-M3-MW	OXLEY Circular Amenity Light - 15W - IP54 - 3CCT - White - Opal Diffuser - LiFePO4 - Microwave Sensor		10
EL-120651-M3-SD	OXLEY Circular Amenity Light - 15W - IP54 - 3CCT - White - Opal Diffuser - LiFePO4 - Step Dim Micro Sensor		10

FORGE GEAR TRAYS



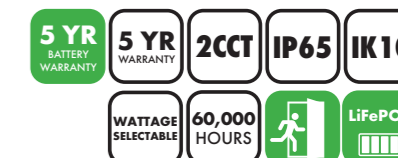
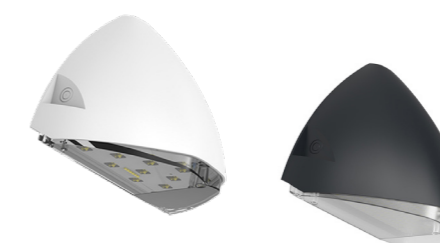
CODE	DESCRIPTION	FEATURES	BOX QTY
EL-193450	FORGE Circular 2D Style Gear Tray - 15W - 3CCT - 230V	<ul style="list-style-type: none"> Perfect for retrofit applications Microwave sensor version available Step dim microwave sensor version available Emergency version available 	10
EL-193450-MW	FORGE Circular 2D Style Gear Tray - 15W - 3CCT - 230V - Microwave Sensor		10
EL-193450-SD	FORGE Circular 2D Style Gear Tray - 15W - 3CCT - 230V - Step Dim Microwave Sensor		10
EL-193450-M3	FORGE Circular 2D Style Gear Tray - 15W - 3CCT - LiFePO4		10
EL-193450-M3-MW	FORGE Circular 2D Style Gear Tray - 15W - 3CCT - LiFePO4 - Microwave Sensor		10
EL-193450-M3-SD	FORGE Circular 2D Style Gear Tray - 15W - 3CCT - LiFePO4 - Step Dim Microwave Sensor		10

OXLEY ECO CIRCULAR AMENITY LIGHT



CODE	DESCRIPTION	FEATURES	BOX QTY
EL-120652	OXLEY ECO Circ Amenity Light - Wattage Selectable - IP54 - 3CCT - White - Opal Diffuser - 230V - NEW	<ul style="list-style-type: none"> Low power consumption Surface mounted Polycarbonate opal diffuser Wattage selectable: 9W/14W/18W 3CCT selectable colour temperature 	10

ECCLESALL DIECAST WALL LIGHT



CODE	DESCRIPTION	FEATURES	BOX QTY
EL-121101-AN	ECCLESALL Wall Pack - 3CCT - IP65 - 230V - Anthracite	<ul style="list-style-type: none"> High efficiency, up to 140lm/W Non-flicker driver Wattage selectable Modern and minimalist design Suitable for rear and side cable entry 	4
EL-121101-AN-M3	ECCLESALL Wall Pack - 3CCT - IP65 - Maintained/Non-Maintained - LiFePO4 - Anthracite		4
EL-121101-WH	ECCLESALL Wall Pack - 3CCT - IP65 - 230V - White		4

ENDCLIFFE

CIRCULAR AMENITY LIGHT



CODE	DESCRIPTION	FEATURES	BOX QTY
EL-120701-WH	ENDCLIFFE Circular Amenity Light - 14W - IP65 - White Base - Opal Diffuser - 230V - MIB	<p>DAI Versions Available Ask For Full Details</p> <ul style="list-style-type: none"> • Reduced power consumption • Surface mounted • Impact modified polycarbonate housing and diffuser • Microwave sensor version available • Emergency version available • Photocell version available 	5
EL-120701-WH-MW	ENDCLIFFE Circular Amenity Light - 14W - IP65 - White Base - Opal Diffuser - 230V - Microwave Sensor - MIB		5
EL-120701-WH-DD	ENDCLIFFE Circular Amenity Light - 14W - IP65 - White Base - Opal Diffuser - 230V - Photocell - MIB		5
EL-120701-WH-M3	ENDCLIFFE Circular Amenity Light - 14W - IP65 - White Base - Opal Diffuser - LiFePO4 - MIB		5
EL-120701-WH-M3-MW	ENDCLIFFE Circular Amenity Light - 14W - IP65 - White Base - Opal Diffuser - LiFePO4 - Microwave Sensor - MIB		5
EL-120701-WH-M3-DD	ENDCLIFFE Circular Amenity Light - 14W - IP65 - White Base - Opal Diffuser - LiFePO4 - Photocell - MIB		5
EL-120701-BL	ENDCLIFFE Circular Amenity Light - 14W - IP65 - Black Base - Opal Diffuser - 230V - MIB		5
EL-120701-BL-MW	ENDCLIFFE Circular Amenity Light - 14W - IP65 - Black Base - Opal Diffuser - 230V - Microwave Sensor - MIB		5
EL-120701-BL-DD	ENDCLIFFE Circular Amenity Light - 14W - IP65 - Black Base - Opal Diffuser - 230V - Photocell - MIB		5
EL-120701-BL-M3	ENDCLIFFE Circular Amenity Light - 14W - IP65 - Black Base - Opal Diffuser - LiFePO4 - MIB		5
EL-120701-BL-M3-MW	ENDCLIFFE Circular Amenity Light - 14W - IP65 - Black Base - Opal Diffuser - LiFePO4 - Microwave Sensor - MIB		5
EL-120701-BL-M3-DD	ENDCLIFFE Circular Amenity Light - 14W - IP65 - Black Base - Opal Diffuser - LiFePO4 - Photocell - MIB		5
EL-120702-WH	ENDCLIFFE Circular Amenity Light - 14W - IP65 - White Base - Prismatic Diffuser - 230V - MIB		5
EL-120702-WH-MW	ENDCLIFFE Circular Amenity Light - 14W - IP65 - White Base - Prismatic Diffuser - 230V - Microwave Sensor - MIB		5
EL-120702-WH-DD	ENDCLIFFE Circular Amenity Light - 14W - IP65 - White Base - Prismatic Diffuser - 230V - Photocell - MIB		5
EL-120702-WH-M3	ENDCLIFFE Circular Amenity Light - 14W - IP65 - White Base - Prismatic Diffuser - LiFePO4 - MIB		5
EL-120702-WH-M3-MW	ENDCLIFFE Circular Amenity Light - 14W - IP65 - White Base - Prismatic Diffuser - LiFePO4 - Microwave Sensor - MIB		5
EL-120702-WH-M3-DD	ENDCLIFFE Circular Amenity Light - 14W - IP65 - White Base - Prismatic Diffuser - LiFePO4 - Photocell - MIB	5	
EL-120702-BL	ENDCLIFFE Circular Amenity Light - 14W - IP65 - Black Base - Prismatic Diffuser - 230V - MIB	5	
EL-120702-BL-MW	ENDCLIFFE Circular Amenity Light - 14W - IP65 - Black Base - Prismatic Diffuser - 230V - Microwave Sensor - MIB	5	
EL-120702-BL-DD	ENDCLIFFE Circular Amenity Light - 14W - IP65 - Black Base - Prismatic Diffuser - 230V - Photocell - MIB	5	
EL-120702-BL-M3	ENDCLIFFE Circular Amenity Light - 14W - IP65 - Black Base - Prismatic Diffuser - LiFePO4 - MIB	5	
EL-120702-BL-M3-MW	ENDCLIFFE Circular Amenity Light - 14W - IP65 - Black Base - Prismatic Diffuser - LiFePO4 - Microwave Sensor - MIB	5	
EL-120702-BL-M3-DD	ENDCLIFFE Circular Amenity Light - 14W - IP65 - Black Base - Prismatic Diffuser - LiFePO4 - Photocell - MIB	5	

WHIRLOW

SQUARE AMENITY LIGHT



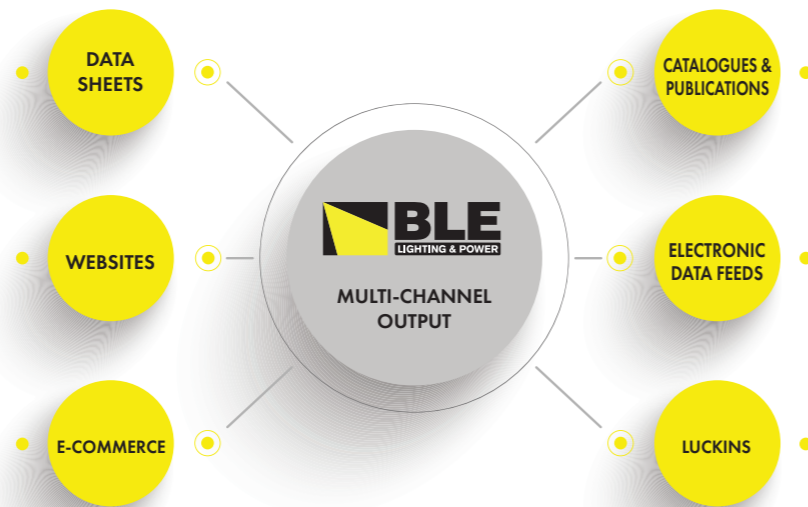
CODE	DESCRIPTION	FEATURES	BOX QTY
EL-120901-WH	WHIRLOW Square Amenity Light - 14W - IP65 - White Base - Opal Diffuser - 230V - MIB	<p>DAI Versions Available Ask For Full Details</p> <ul style="list-style-type: none"> • Reduced power consumption • Surface mounted • Impact modified polycarbonate housing and diffuser • Microwave sensor version available • Emergency version available • Photocell version available 	5
EL-120901-WH-MW	WHIRLOW Square Amenity Light - 14W - IP65 - White Base - Opal Diffuser - 230V - Microwave Sensor - MIB		5
EL-120901-WH-DD	WHIRLOW Square Amenity Light - 14W - IP65 - White Base - Opal Diffuser - 230V - Photocell - MIB		5
EL-120901-WH-M3	WHIRLOW Square Amenity Light - 14W - IP65 - White Base - Opal Diffuser - LiFePO4 - MIB		5
EL-120901-WH-M3-MW	WHIRLOW Square Amenity Light - 14W - IP65 - White Base - Opal Diffuser - LiFePO4 - Microwave Sensor - MIB		5
EL-120901-WH-M3-DD	WHIRLOW Square Amenity Light - 14W - IP65 - White Base - Opal Diffuser - LiFePO4 - Photocell - MIB		5
EL-120901-BL	WHIRLOW Square Amenity Light - 14W - IP65 - Black Base - Opal Diffuser - 230V - MIB		5
EL-120901-BL-MW	WHIRLOW Square Amenity Light - 14W - IP65 - Black Base - Opal Diffuser - 230V - Microwave Sensor - MIB		5
EL-120901-BL-DD	WHIRLOW Square Amenity Light - 14W - IP65 - Black Base - Opal Diffuser - 230V - Photocell - MIB		5
EL-120901-BL-M3	WHIRLOW Square Amenity Light - 14W - IP65 - Black Base - Opal Diffuser - LiFePO4 - MIB		5
EL-120901-BL-M3-MW	WHIRLOW Square Amenity Light - 14W - IP65 - Black Base - Opal Diffuser - LiFePO4 - Microwave Sensor - MIB		5
EL-120901-BL-M3-DD	WHIRLOW Square Amenity Light - 14W - IP65 - Black Base - Opal Diffuser - LiFePO4 - Photocell - MIB		5
EL-120902-WH	WHIRLOW Square Amenity Light - 14W - IP65 - White Base - Prismatic Diffuser - 230V - MIB		5
EL-120902-WH-MW	WHIRLOW Square Amenity Light - 14W - IP65 - White Base - Prismatic Diffuser - 230V - Microwave Sensor - MIB		5
EL-120902-WH-DD	WHIRLOW Square Amenity Light - 14W - IP65 - White Base - Prismatic Diffuser - 230V - Photocell - MIB		5
EL-120902-WH-M3	WHIRLOW Square Amenity Light - 14W - IP65 - White Base - Prismatic Diffuser - LiFePO4 - MIB		5
EL-120902-WH-M3-MW	WHIRLOW Square Amenity Light - 14W - IP65 - White Base - Prismatic Diffuser - LiFePO4 - Microwave Sensor - MIB		5
EL-120902-WH-M3-DD	WHIRLOW Square Amenity Light - 14W - IP65 - White Base - Prismatic Diffuser - LiFePO4 - Photocell - MIB	5	
EL-120902-BL	WHIRLOW Square Amenity Light - 14W - IP65 - Black Base - Prismatic Diffuser - 230V - MIB	5	
EL-120902-BL-MW	WHIRLOW Square Amenity Light - 14W - IP65 - Black Base - Prismatic Diffuser - 230V - Microwave Sensor - MIB	5	
EL-120902-BL-DD	WHIRLOW Square Amenity Light - 14W - IP65 - Black Base - Prismatic Diffuser - 230V - Photocell - MIB	5	
EL-120902-BL-M3	WHIRLOW Square Amenity Light - 14W - IP65 - Black Base - Prismatic Diffuser - LiFePO4 - MIB	5	
EL-120902-BL-M3-MW	WHIRLOW Square Amenity Light - 14W - IP65 - Black Base - Prismatic Diffuser - LiFePO4 - Microwave Sensor - MIB	5	
EL-120902-BL-M3-DD	WHIRLOW Square Amenity Light - 14W - IP65 - Black Base - Prismatic Diffuser - LiFePO4 - Photocell - MIB	5	

THE INNOVATIVE ePIM SYSTEM

BLE is a subscriber to the innovative ePIM System. This cutting edge platform is not only user friendly but also incredibly powerful, acting as a one-stop solution for organising, managing, and enriching product data in preparation for multi-channel distribution.

What sets ePIM apart is its ability to serve as a centralised source of truth for all our valuable data, easily accessible by various stakeholders such as Manufacturers, Wholesalers, Distributors, and Marketing & Data Teams. This helps streamline our processes and ensures that everyone is on the same page.

ePIM's advanced automation capabilities guarantee that our data sheets stay up-to-date at all times. This means that our partners and clients can rely on us for relevant and accurate information, ultimately enhancing their overall experience.



DORE

DIECAST AMENITY LIGHT



CODE	DESCRIPTION	FEATURES	BOX QTY
EL-120801	DORE Die-Cast Circular Eyelid Amenity Light - 14W - IP65 - Black - Opal Diffuser - 230V - MIB	<p>DAI Versions Available Ask For Full Details</p> <ul style="list-style-type: none"> • Reduced power consumption • High quality diecast aluminium base and hood • Impact modified polycarbonate opal diffuser • Microwave sensor, Emergency, and Photocell versions available • Removeable eyelid 	5
EL-120801-MW	DORE Die-Cast Circular Eyelid Amenity Light - 14W - IP65 - Black - Opal Diffuser - 230V - Microwave Sensor - MIB		5
EL-120801-DD	DORE Die-Cast Circular Eyelid Amenity Light - 14W - IP65 - Black - Opal Diffuser - 230V - Photocell - MIB		5
EL-120801-M3	DORE Die-Cast Circular Eyelid Amenity Light - 14W - IP65 - Black - Opal Diffuser - LiFePO4 - MIB		5
EL-120801-M3-MW	DORE Die-Cast Circular Eyelid Amenity Light - 14W - IP65 - Black - Opal Diffuser - LiFePO4 - Microwave Sensor - MIB		5
EL-120801-M3-DD	DORE Die-Cast Circular Eyelid Amenity Light - 14W - IP65 - Black - Opal Diffuser - LiFePO4 - Photocell - MIB		5
EL-120802-M3	DORE Die-Cast Circular Eyelid Amenity Light - 14W - IP65 - Black - Opal Diffuser - LiFePO4 - Self Test - MIB		5
EL-120802-M3-MW	DORE Die-Cast Circular Eyelid Amenity Light - 14W - IP65 - Black - Opal Diffuser - LiFePO4 - Micro Sensor - Self Test		5
EL-120802-M3-DD	DORE Die-Cast Circular Eyelid Amenity Light - 14W - IP65 - Black - Opal Diffuser - LiFePO4 - Photocell - Self Test - MIB		5

GREENHILL BATTEN FITTING

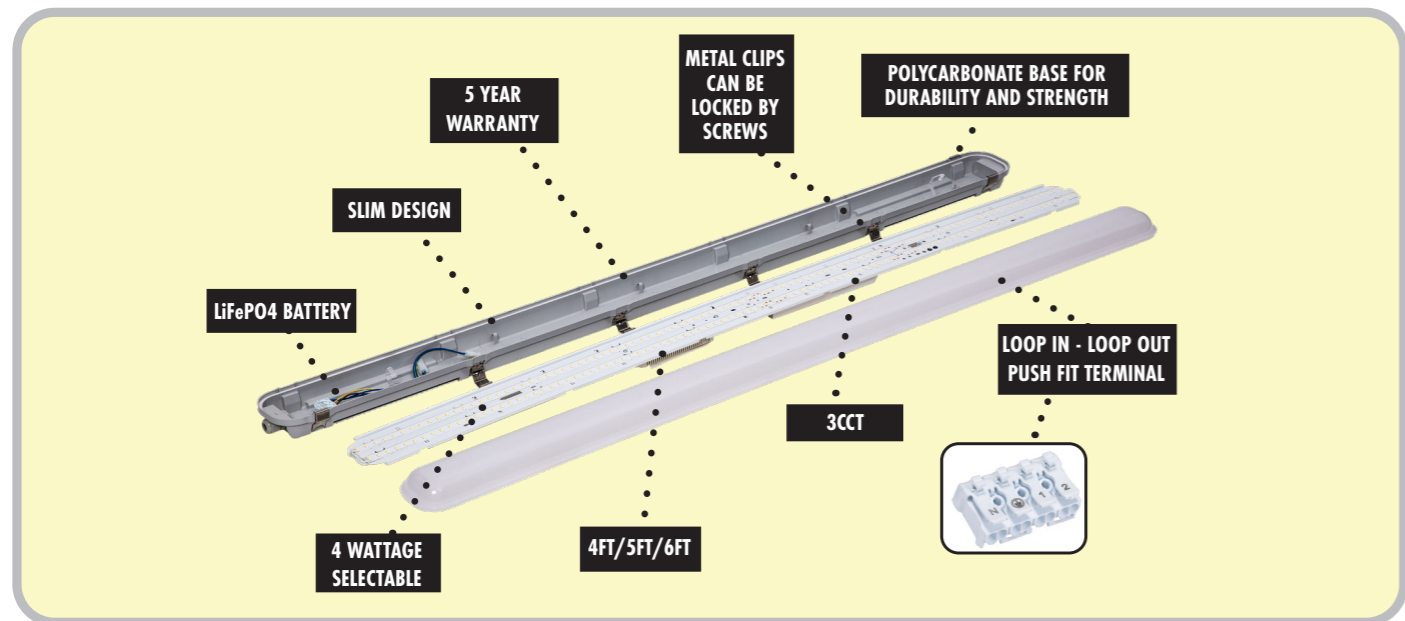


CODE	DESCRIPTION	FEATURES	BOX QTY
EL-182810	GREENHILL LED Batten Fitting - IP20 - 5ft - 3CCT - Wattage Selectable (28-50W) - 230V	<ul style="list-style-type: none"> Suitable for multi-purpose applications Push-fit terminals and clip-on gear tray 	6
EL-182810-M3	GREENHILL LED Batten Fitting - IP20 - 5ft - 3CCT - Wattage Selectable (28-50W) - LiFePO4		6

ELLESMERE NON-CORROSIVE FITTING



CODE	DESCRIPTION	FEATURES	BOX QTY
EL-172704	ELLESMERE NCF - 4FT - Adjustable Wattage 23W/29W/34W/40W - 2760lm/3480lm/4080lm/4800lm - 3CCT - IP65 - 230V	<ul style="list-style-type: none"> Slim design with high efficiency diffuser Polycarbonate body for durability and strength Robust stainless steel clips Easy installation Clips can be locked by screws Metal gear tray 3CCT Wattage selectable 	6
EL-172704-MW	ELLESMERE NCF - 4FT - Adjustable Wattage 23W/29W/34W/40W - 2760lm/3480lm/4080lm/4800lm - 3CCT - IP65 - 230V - Microwave Sensor		6
EL-172704-M3	ELLESMERE NCF - 4FT - Adjustable Wattage 23W/29W/34W/40W - 2760lm/3480lm/4080lm/4800lm - 3CCT - IP65 - LiFePO4		6
EL-172704-M3-MW	ELLESMERE NCF - 4FT - Adjustable Wattage 23W/29W/34W/40W - 2760lm/3480lm/4080lm/4800lm - 3CCT - IP65 - LiFePO4 - Microwave Sensor		6
EL-172705	ELLESMERE NCF - 5FT - Adjustable Wattage 34W/42W/51W/60W - 4080lm/5040lm/6120lm/7200lm - 3CCT - IP65 - 230V		6
EL-172705-MW	ELLESMERE NCF - 5FT - Adjustable Wattage 34W/42W/51W/60W - 4080lm/5040lm/6120lm/7200lm - 3CCT - IP65 - 230V - Microwave Sensor		6
EL-172705-M3	ELLESMERE NCF - 5FT - Adjustable Wattage 34W/42W/51W/60W - 4080lm/5040lm/6120lm/7200lm - 3CCT - IP65 - LiFePO4		6
EL-172705-M3-MW	ELLESMERE NCF - 5FT - Adjustable Wattage 34W/42W/51W/60W - 4080lm/5040lm/6120lm/7200lm - 3CCT - IP65 - LiFePO4 - Microwave Sensor		6
EL-172706	ELLESMERE NCF - 6FT - Adjustable Wattage 37W/46W/56W/70W - 4440lm/5520lm/6720lm/8400lm - 3CCT - IP65 - 230V		4
EL-172706-MW	ELLESMERE NCF - 6FT - Adjustable Wattage 37W/46W/56W/70W - 4440lm/5520lm/6720lm/8400lm - 3CCT - IP65 - 230V - Microwave Sensor		4
EL-172706-M3	ELLESMERE NCF - 6FT - Adjustable Wattage 37W/46W/56W/70W - 4440lm/5520lm/6720lm/8400lm - 3CCT - IP65 - LiFePO4		4
EL-172706-M3-MW	ELLESMERE NCF - 6FT - Adjustable Wattage 37W/46W/56W/70W - 4440lm/5520lm/6720lm/8400lm - 3CCT - IP65 - LiFePO4 - Microwave Sensor		4

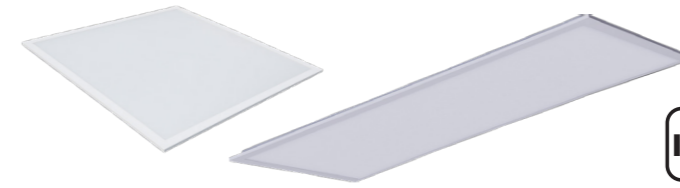


BROADFIELD CIRCULAR PANEL



CODE	DESCRIPTION	FEATURES	BOX QTY
EL-162601	BROADFIELD Circ Panel - Adjustable Wattage (10/13/16W) - 3CCT - 230V - 235mm, 50,000hrs	<ul style="list-style-type: none"> 3CCT Even light output Slim design Ideal for retrofit 	20
EL-162602	BROADFIELD Circ Panel - Adjustable Wattage (16/20/22W) - 3CCT - 230V - 300mm, 40,000hrs - NEW		10

WESTWOOD BACK-LIT PANELS



CODE	DESCRIPTION	FEATURES	BOX QTY
EL-162504	WESTWOOD Back-Lit Panel - 595 x 595mm - 3CCT - Wattage Adjustable (33-40W) - UGR<19 - TP(a) - 230V - NEW	<ul style="list-style-type: none"> High efficiency up to 120lm/W Even light distribution Flicker free Wattage selectable 	6
EL-162503	WESTWOOD Back-Lit Panel - 595 x 1195mm - 3CCT - Wattage Adjustable (48-60W) - UGR<19 - TP(a) - 230V - NEW		4
EL-162504-M3	WESTWOOD Back-Lit Panel - 595 x 595mm - 3CCT - Wattage Adjustable (33-40W) - UGR<19 - TP(a) - LiFePO4 - NEW		6
EL-162503-M3	WESTWOOD Back-Lit Panel - 595 x 1195mm - 3CCT - Wattage Adjustable (48-60W) - UGR<19 - TP(a) - LiFePO4 - NEW		4

BOWMAN EMERGENCY CONVERSION PACKS



CODE	DESCRIPTION	FEATURES	BOX QTY
EL-193650	BOWMAN Emergency Conversion Pack for use with BROADFIELD - LiFePO4	<ul style="list-style-type: none"> Green LED healthy charge indicator LiFePO4 	6
EL-193651	BOWMAN Emergency Conversion Pack for use with WESTWOOD - LiFePO4		6
EL-193652	BOWMAN Emergency Conversion Pack - LiFePO4 - NEW		6

HERDINGS MANUAL TEST SWITCH



CODE	DESCRIPTION	FEATURES	BOX QTY
EL-191601	HERDINGS Manual Test Switch Backing Box - 25mm	<ul style="list-style-type: none"> Simple test switch unit Key activation provides visual indication Extremely cost effective solution A number of luminaires can be tested together 	6
EL-191602	HERDINGS Manual Test Switch Backing Box - 16mm		6
EL-191604	HERDINGS Manual Test Switch - Plate		6
EL-191605	HERDINGS Manual Test Switch - Switch (Rated 230V, 10A)		6
EL-191603	HERDINGS Manual Test Switch - Fish Key		6

ABBEYFIELD BATTERIES



CODE	DESCRIPTION	FEATURES	BOX QTY
EL-193309	ABBEYFIELD LiFePO4 Battery 2000mA, 18650 3.2V	<ul style="list-style-type: none"> Legacy battery range High temperature batteries Suitable for emergency lighting applications 	6
EL-193301	ABBEYFIELD 2 Cell Battery Pack - In Line - Nickel Cadmium - 2.4V 4.0Ah - High Temperature - Flying Leads		6
EL-193302	ABBEYFIELD 2 Cell Battery Pack - In Line - Nickel Metal Hydride		6
EL-193303	ABBEYFIELD 2 Cell Battery Pack - Side by Side - Nickel Cadmium - 2.4V 4.0Ah - High Temperature - Flying Leads		6
EL-193304	ABBEYFIELD 3 Cell Battery Pack - In Line - Nickel Cadmium - 3.6V 4.0Ah - High Temperature - Flying Leads		6
EL-193305	ABBEYFIELD 3 Cell Battery Pack - Side by Side - Nickel Cadmium - 3.6V 4.0Ah - High Temperature - Flying Leads		6
EL-193306	ABBEYFIELD 4 Cell Battery Pack - In Line - Nickel Cadmium - 4.8V 4.0Ah - High Temperature - Flying Leads		6
EL-193307	ABBEYFIELD 4 Cell Battery Pack - Side by Side - Nickel Cadmium - 4.8V 4.0Ah - High Temperature - Flying Leads		6
EL-193308	ABBEYFIELD NiCD Cell 3st 2000mA - 3.6V - Sub C Battery		6
EL-193310	ABBEYFIELD 3 Cell - NiCD - 1.6Ah - 3.6V - Sub C Battery		6

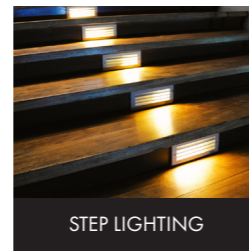
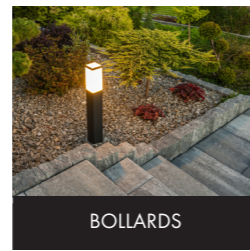
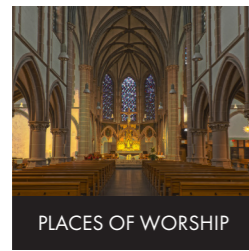
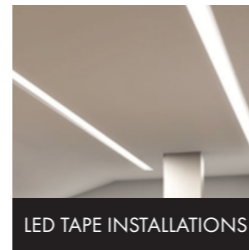
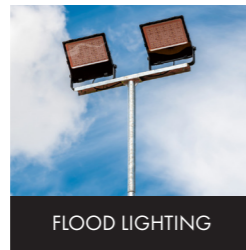
STAVELEY

MINI LED INVERTERS



CODE	DESCRIPTION	FEATURES
PS-130401	STAVELEY 50W Mini LED Inverter - 2 x 12Ah 12V Batteries	<ul style="list-style-type: none"> Engineered to suit LED lighting Cost effective solution to powering unmodified LED Luminaires in the event of mains failure Multi-functional LCD display 32 bit micro-controller Overload and short circuitry protection Compatible with optional remote hold-off relays Steel housing Designed in accordance with BS EN 50171:2021 Wall mount or free standing
PS-130402	STAVELEY 120W Mini LED Inverter - 2 x 24Ah 12V Batteries	
PS-130403	STAVELEY 200W Mini LED Inverter - 2 x 36Ah 12V Batteries	
PS-130404	STAVELEY 400W Mini LED Inverter - 4 x 36Ah 12V Batteries	
PS-130405	STAVELEY 800W Mini LED Inverter - 2 x 100Ah 12V Batteries	

Compact Emergency Lighting Static Inverters providing 230V AC to power standard LED lighting for three hours at full light output in emergency mode.



STAVELEY compact static inverters are specifically designed to operate LED lighting. By supplying 230V AC in emergency mode, they make it possible for standard mains powered LED luminaires to be operated under mains or circuit failure conditions at full light output.

For most installations the wiring is extremely simple. And with a range of sizes, individual inverters can be selected for each application so that the designer can choose to use either a number of individual units to simplify the cable installation, or use larger units to power a greater number of points.

The LED display on each unit provides information on the status of each unit providing information on mains voltage, output voltage, battery status and fault indication.

BLE has been manufacturing and supplying central power systems for over 50 years and offers a wide range of static inverter systems together with on-site services including maintenance contracts.

STANFORD

SINGLE PHASE STATIC INVERTERS



CODE	DESCRIPTION	FEATURES
PS-140501	STANFORD 1.6KVA (1.3KW) Single Phase Static Inverter Package - 192V - 16 x 24Ah 12V Batteries	<ul style="list-style-type: none"> Designed for emergency lighting applications Compact design for ease of installation in a restricted space Smart battery charge management to optimise battery life Transformer based design Low maintenance Output configuration - active standby Complies with BS EN 50171:2021 Batteries comply with EN 60896-21 and EN 60896-22 Sealed lead acid batteries rated for 10 years service life Digital system status display
PS-140501-24	STANFORD Step Down Transformer Package including Enclosure, Fuses, Fuse Holders - 24V Output	
PS-140501-48	STANFORD Step Down Transformer Package including Enclosure, Fuses, Fuse Holders - 48V Output	
PS-140501-110	STANFORD Step Down Transformer Package including Enclosure, Fuses, Fuse Holders - 110V Output	
PS-140501-BO	STANFORD Battery Package Only including Isolator, Shrouds, Links & Leads	
PS-140501-NB	STANFORD 1.6KVA (1.3KW) Single Phase Static Inverter Only - No Batteries	
PS-140503	STANFORD 2.6KVA (2.2KW) Single Phase Static Inverter Package - 192V - 16 x 36Ah 12V Batteries	
PS-140503-24	STANFORD Step Down Transformer Package including Enclosure, Fuses, Fuse Holders - 24V Output	
PS-140503-48	STANFORD Step Down Transformer Package including Enclosure, Fuses, Fuse Holders - 48V Output	
PS-140503-110	STANFORD Step Down Transformer Package including Enclosure, Fuses, Fuse Holders - 110V Output	
PS-140503-BO	STANFORD Battery Package Only including Isolator, Shrouds, Links & Leads	
PS-140503-NB	STANFORD 2.6KVA (2.2KW) Single Phase Static Inverter Only - No Batteries	
PS-140505	STANFORD 3.8KVA (3.2KW) Single Phase Static Inverter Package - 192V - 16 x 64Ah 12V Batteries	
PS-140505-24	STANFORD Step Down Transformer Package including Enclosure, Fuses, Fuse Holders - 24V Output	
PS-140505-48	STANFORD Step Down Transformer Package including Enclosure, Fuses, Fuse Holders - 48V Output	
PS-140505-110	STANFORD Step Down Transformer Package including Enclosure, Fuses, Fuse Holders - 110V Output	
PS-140505-BO	STANFORD Battery Package Only including Isolator, Shrouds, Links & Leads	
PS-140505-NB	STANFORD 3.8KVA (3.2KW) Single Phase Static Inverter Only - No Batteries	
PS-140507	STANFORD 5.5KVA (4.7KW) Single Phase Static Inverter Package - 192V - 16 x 100Ah 12V Batteries	
PS-140507-24	STANFORD Step Down Transformer Package including Enclosure, Fuses, Fuse Holders - 24V Output	
PS-140507-48	STANFORD Step Down Transformer Package including Enclosure, Fuses, Fuse Holders - 48V Output	
PS-140507-110	STANFORD Step Down Transformer Package including Enclosure, Fuses, Fuse Holders - 110V Output	
PS-140507-BO	STANFORD Battery Package Only including Isolator, Shrouds, Links & Leads	
PS-140507-NB	STANFORD 5.5KVA (4.7KW) Single Phase Static Inverter Only - No Batteries	
PS-140509	STANFORD 7.6KVA (6.3KW) Single Phase Static Inverter Package - 192V - 32 x 64Ah 12V Batteries	
PS-140509-24	STANFORD Step Down Transformer Package including Enclosure, Fuses, Fuse Holders - 24V Output	
PS-140509-48	STANFORD Step Down Transformer Package including Enclosure, Fuses, Fuse Holders - 48V Output	
PS-140509-110	STANFORD Step Down Transformer Package including Enclosure, Fuses, Fuse Holders - 110V Output	
PS-140509-BO	STANFORD Battery Package Only including Isolator, Shrouds, Links & Leads	
PS-140509-NB	STANFORD 7.6KVA (6.3KW) Single Phase Static Inverter Only - No Batteries	
PS-140511	STANFORD 11KVA (9.3KW) Single Phase Static Inverter Package - 192V - 32 x 100Ah 12V Batteries	
PS-140511-24	STANFORD Step Down Transformer Package including Enclosure, Fuses, Fuse Holders - 24V Output	
PS-140511-48	STANFORD Step Down Transformer Package including Enclosure, Fuses, Fuse Holders - 48V Output	
PS-140511-110	STANFORD Step Down Transformer Package including Enclosure, Fuses, Fuse Holders - 110V Output	
PS-140511-BO	STANFORD Battery Package Only including Isolator, Shrouds, Links & Leads	
PS-140511-NB	STANFORD 11KVA (9.3KW) Single Phase Static Inverter Only - No Batteries	
PS-140513	STANFORD 16.6KVA (14.1KW) Single Phase Static Inverter Package - 192V - 48 x 100Ah 12V Batteries	
PS-140513-24	STANFORD Step Down Transformer Package including Enclosure, Fuses, Fuse Holders - 24V Output	
PS-140513-48	STANFORD Step Down Transformer Package including Enclosure, Fuses, Fuse Holders - 48V Output	
PS-140513-110	STANFORD Step Down Transformer Package including Enclosure, Fuses, Fuse Holders - 110V Output	
PS-140513-BO	STANFORD Battery Package Only including Isolator, Shrouds, Links & Leads	
PS-140513-NB	STANFORD 16.6KVA (14.1KW) Single Phase Static Inverter Only - No Batteries	
PS-140515-RT	STANFORD Remote Test for Static Inverters - For use with 1.6KVA, 2.6KVA and 3.8KVA	<ul style="list-style-type: none"> Remote test for static inverters
PS-140516-RT	STANFORD Remote Test for Static Inverters - For use with 5.5KVA & 7.6KVA	
PS-140517-RT	STANFORD Remote Test for Static Inverters - For use with 11KVA & 16.6KVA	

RENISHAW

THREE PHASE STATIC INVERTERS



CODE	DESCRIPTION	FEATURES
PS-140601	RENISHAW 3.3KVA (2.8KW) Three Phase Static Inverter Package - 384V - 32 x 24Ah 12V Batteries	<ul style="list-style-type: none"> • Designed for Emergency Lighting applications • Smart battery charge management to optimise battery life • Transformer based design • Low maintenance • Output configuration – active standby • Complies with BS EN 50171: 2021 • Batteries comply with EN 60896-21 & 60896-22 • Touch screen digital display indicating system status and menus • High specification technical control circuit
PS-140601-BO	RENISHAW Battery Package including Isolator, Shrouds, Links & Leads	
PS-140601-NB	RENISHAW 3.3KVA (2.8KW) Three Phase Static Inverter Only - No Batteries	
PS-140603	RENISHAW 5.3KVA (4.5KW) Three Phase Static Inverter Package - 384V - 32 x 36Ah 12V Batteries	
PS-140603-BO	RENISHAW Battery Package including Isolator, Shrouds, Links & Leads	
PS-140603-NB	RENISHAW 5.3KVA (4.5KW) Three Phase Static Inverter Only - No Batteries	
PS-140605	RENISHAW 7.6KVA (6.5KW) Three Phase Static Inverter Package - 384V - 32 x 64Ah 12V Batteries	
PS-140605-BO	RENISHAW Battery Package including Isolator, Shrouds, Links & Leads	
PS-140605-NB	RENISHAW 7.6KVA (6.5KW) Three Phase Static Inverter Only - No Batteries	
PS-140607	RENISHAW 11KVA (9.3KW) Three Phase Static Inverter Package - 384V - 32 x 100Ah 12V Batteries	
PS-140607-BO	RENISHAW Battery Package including Isolator, Shrouds, Links & Leads	
PS-140607-NB	RENISHAW 11KVA (9.3KW) Three Phase Static Inverter Only - No Batteries	
PS-140608	RENISHAW 17KVA (14KW) Three Phase Static Inverter Package - 384V - 64 x 64Ah 12V Batteries	
PS-140608-BO	RENISHAW Battery Package including Isolator, Shrouds, Links & Leads	
PS-140608-NB	RENISHAW 17KVA (14KW) Three Phase Static Inverter Only - No Batteries	
PS-140609	RENISHAW 22KVA (19.7KW) Three Phase Static Inverter Package - 384V - 64 x 100Ah 12V Batteries	
PS-140609-BO	RENISHAW Battery Package including Isolator, Shrouds, Links & Leads	
PS-140609-NB	RENISHAW 22KVA (19.7KW) Three Phase Static Inverter Only - No Batteries	
PS-140611	RENISHAW 33KVA (28KW) Three Phase Static Inverter Package - 384V - 96 x 100Ah 12V Batteries	
PS-140611-BO	RENISHAW Battery Package including Isolator, Shrouds, Links & Leads	
PS-140611-NB	RENISHAW 33KVA (28KW) Three Phase Static Inverter Only - No Batteries	
PS-140613	RENISHAW 44KVA (37.4KW) Three Phase Static Inverter Package - 384V - 128 x 100Ah 12V Batteries	
PS-140613-BO	RENISHAW Battery Package including Isolator, Shrouds, Links & Leads	
PS-140613-NB	RENISHAW 44KVA (37.4KW) Three Phase Static Inverter Only - No Batteries	
PS-140615	RENISHAW 50KVA (40KW) Three Phase Static Inverter Package - 384V - 160 x 100Ah 12V Batteries	
PS-140615-BO	RENISHAW Battery Package including Isolator, Shrouds, Links & Leads	
PS-140615-NB	RENISHAW 50KVA (40KW) Three Phase Static Inverter Only - No Batteries	

HEATHCOTE

MINI CENTRAL BATTERY UNIT



CODE	DESCRIPTION	FEATURES
PS-120201	HEATHCOTE 24V DC Mini Central Battery Unit - 160W - 2 x 24Ah 12V Batteries	<ul style="list-style-type: none"> • Safe, reliable and secure source of emergency power • Meets the requirements of BS EN 50171:2021 • Efficient, easily operated unit • Low maintenance costs
PS-120202	HEATHCOTE 24V DC Mini Central Battery Unit - 250W - 2 x 36Ah 12V Batteries	
PS-120203	HEATHCOTE 24V DC Mini Central Battery Unit - 400W - 2 x 64Ah 12V Batteries	

BREARLEY

BATTERY LINKS



CODE	DESCRIPTION	FEATURES
PS-110109	BREARLEY Battery Links for 1.6KVA Static Inverter	<ul style="list-style-type: none"> • BREARLEY Battery Links for use with Static Inverters
PS-110110	BREARLEY Battery Links for 2.6KVA Static Inverter	
PS-110111	BREARLEY Battery Links for 3.8KVA Static Inverter	
PS-110112	BREARLEY Battery Links for 5.5KVA Static Inverter	
PS-110113	BREARLEY Battery Links for 24V Static Inverter	
PS-110114	BREARLEY Battery Links for 48V Static Inverter	
PS-110116	BREARLEY Battery Links for 110V Static Inverter	

SILVERWELL

SEALED LEAD ACID BATTERIES



CODE	DESCRIPTION	FEATURES
PS-111924	SILVERWELL 12V 12Ah Sealed Lead Acid Battery - NEW	<ul style="list-style-type: none"> • EUROBAT Classification: 10 to 12 years 'Long Life' • High rate discharge performance VRLA battery • Compliant with IEC60896-21 and 22 • Absorbed Glass Mat construction with no free acid • Gas recombination • Good recovery from deep discharge • Operation in any orientation (excluding continuous inverted use)
PS-111925	SILVERWELL 12V 24Ah Sealed Lead Acid Battery - NEW	
PS-111926	SILVERWELL 12V 36Ah Sealed Lead Acid Battery - NEW	
PS-111927	SILVERWELL 12V 70Ah Sealed Lead Acid Battery - NEW	
PS-111928	SILVERWELL 12V 100Ah Sealed Lead Acid Battery - NEW	

We supply YUASA VRLA Batteries

Specially designed for emergency lighting

Industrial applications

For use alongside our range of power systems

For more information on the range available, please speak to a member of the sales team: **01246 432325**

TAPTON BATTERY CABINETS



CODE	DESCRIPTION	FEATURES
PS-150701	TAPTON Battery Cabinet - 17Ah/24Ah/38Ah (Qty 5/3/2) OR 65Ah/100Ah (Qty 1) - Integral	<ul style="list-style-type: none"> Designed and built for battery systems Compact footprint and easy to assemble High load capacity Manufactured to IP21 Manufactured from high quality steel Easy to assemble and disassemble Can be used for a wide range of battery ratings Rubber clad runners
PS-150702	TAPTON Battery Cabinet - 17Ah/24Ah/38Ah (Qty 6/4/3) - Integral	
PS-150703	TAPTON Battery Cabinet - 17Ah/24Ah (Qty 3/2) - Integral	
PS-150704	TAPTON Battery Cabinet - 17Ah/24Ah/38Ah (Qty 10/6/4) OR 65Ah/100Ah (Qty 2) - Combination	
PS-150705	TAPTON Battery Cabinet - 17Ah/24Ah/38Ah (Qty 14/8/6) OR 65Ah/100Ah (Qty 3) - Combination	
PS-150706	TAPTON Battery Cabinet - 17Ah/24Ah/38Ah (Qty 20/12/8) OR 65Ah/100Ah (Qty 4) - Combination	
PS-150707	TAPTON Battery Cabinet - 17Ah/24Ah/38Ah (Qty 28/16/12) OR 65Ah/100Ah (Qty 6) - Combination	
PS-150708	TAPTON Battery Cabinet - 17Ah/24Ah/38Ah (Qty 36/20/16) OR 65Ah/100Ah (Qty 8) - Combination	
PS-150709	TAPTON Battery Cabinet - 17Ah/24Ah/38Ah (Qty 44/28/20) OR 65Ah/100Ah (Qty 10) - Combination	
PS-150710	TAPTON Battery Cabinet - 24Ah/38Ah (Qty 30/24) OR 65Ah/100Ah (Qty 12) - Combination	
PS-150711	TAPTON Battery Cabinet - 24Ah/38Ah (Qty 40/32) OR 65Ah/100Ah (Qty 16) - Combination	
PS-150712	TAPTON Battery Cabinet - 24Ah/38Ah (Qty 56/40) OR 65Ah/100Ah (Qty 20) - Combination	
PS-150713	TAPTON Battery Cabinet - 65Ah/100Ah (Qty 24) - Combination	
PS-150714	TAPTON Battery Cabinet - 65Ah/100Ah (Qty 32) - Combination	
PS-150715	TAPTON Battery Cabinet - 65Ah/100Ah (Qty 40) - Combination	

RINGWOOD BATTERY ISOLATOR



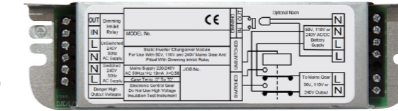
CODE	DESCRIPTION	FEATURES
PS-201201	RINGWOOD Battery Isolator - 16A - 1 String	<ul style="list-style-type: none"> Offers protection between the inverter unit and batteries Protects equipment in the event of a short circuit or overload DC Voltage range: 192-432V
PS-201202	RINGWOOD Battery Isolator - 32A - 1 String	
PS-201203	RINGWOOD Battery Isolator - 40A - 1 String	
PS-201204	RINGWOOD Battery Isolator - 16A - 2 Strings	
PS-201205	RINGWOOD Battery Isolator - 32A - 2 Strings	
PS-201206	RINGWOOD Battery Isolator - 40A - 2 Strings	
PS-201207	RINGWOOD Battery Isolator - 50A - 2 Strings	
PS-201208	RINGWOOD Battery Isolator - 63A - 2 Strings	
PS-201209	RINGWOOD Battery Isolator - 125A - 2 Strings	
PS-201210	RINGWOOD Battery Isolator - 50A - 3 Strings	
PS-201211	RINGWOOD Battery Isolator - 63A - 3 Strings	
PS-201212	RINGWOOD Battery Isolator - 80A - 3 Strings	

THORPE SEMI-AUTOMATIC TEST SWITCH



CODE	DESCRIPTION	FEATURES
EL-193701	THORPE Semi-Automatic Test Switch - c/w Back Box - Surface Mount	<ul style="list-style-type: none"> Cost effective solution for testing luminaires Fail-safe method of operation Clear LED indication for duration test Choice of time settings: 10 mins, 30 mins, 1 hr, 3 hrs
EL-193702	THORPE Semi-Automatic Test Switch - Test Switch - DIN Mount	
EL-193703	THORPE Semi-Automatic Test Switch - Relay Box - 5 to 20 Outputs	

WHITECOTES CIRCUIT FAILURE MONITORING UNITS



CODE	DESCRIPTION	FEATURES
PS-170901-LC	WHITECOTES Circuit Failure Monitoring Unit - Contactor - 12 Amp - 1 Way	<ul style="list-style-type: none"> Static inverter changeover module Suitable for 50V, 110V or 230V AC or DC systems In the event of local sub-circuit supply failure the local emergency lighting circuit is energised (irrespective of the position of the local switch) Compact and easy to install Supplied either as a changeover module, which can be integrally mounted within the luminaire, or housed in a fire rated enclosure for remote mounting
PS-170902-LC	WHITECOTES Circuit Failure Monitoring Unit - Contactor - 12 Amp - 4 Way	
PS-170901-INV	WHITECOTES Circuit Failure Monitoring Unit - PCB with Enclosure - 3 Amp - 1 Way	
PS-170902-INV	WHITECOTES Circuit Failure Monitoring Unit - PCB with Enclosure - 3 Amp - 4 Way	
PS-170903-INV	WHITECOTES Circuit Failure Monitoring Unit - PCB with Enclosure - 3 Amp - 8 Way	
PS-170904-INV	WHITECOTES Circuit Failure Monitoring Unit - PCB with Enclosure - 3 Amp - 12 Way	
PS-170905-INV	WHITECOTES Circuit Failure Monitoring Unit - PCB with Enclosure - 3 Amp - 16 Way	
PS-170906-INV	WHITECOTES Circuit Failure Monitoring Unit - PCB with Enclosure - 3 Amp - 20 Way	
PS-170907-INV	WHITECOTES Circuit Failure Monitoring Unit - PCB with Enclosure - 3 Amp - 24 Way	
PS-170908-INV	WHITECOTES Circuit Failure Monitoring Unit - PCB with Enclosure - 3 Amp - 30 Way	

HILLTOP COMPACT BYPASS SWITCHES



CODE	DESCRIPTION	FEATURES
PS-181001	HILLTOP Compact Bypass Switch - 63A - 4 Pole - 3.4.4	<ul style="list-style-type: none"> Perfect for small to mid-size 3 phase systems, 10-40kVA Easy installation • Compact size
PS-181002	HILLTOP Compact Bypass Switch - 80A - 4 Pole - 3.4.4	

NETHERTHORPE SLIMLINE BYPASS SWITCHES



CODE	DESCRIPTION	FEATURES
PS-181101	NETHERTHORPE Slimline Bypass Switch - 32A - 2 Poles - Single Phase	<ul style="list-style-type: none"> Perfect for smaller single phase and three phase systems Easy installation • Compact size Top/bottom full size gland plates Top/bottom cable access
PS-181102	NETHERTHORPE Slimline Bypass Switch - 63A - 2 Poles - Single Phase	
PS-181103	NETHERTHORPE Slimline Bypass Switch - 63A - 3 Poles - Three Phase	
PS-181104	NETHERTHORPE Slimline Bypass Switch - 32A - 4 Poles - Three Phase	

POOLSBROOK

SINGLE PHASE ONLINE UPS WITH BUILT-IN BATTERY



CODE	DESCRIPTION	FEATURES
PS-221501	POOLSBROOK Single Phase Online UPS with Built-In Battery - 1KVA	<ul style="list-style-type: none"> True double conversion UPS providing power to fully protect mission critical devices such as sensitive networks, small computer centres, servers and telecommunication applications
PS-221503	POOLSBROOK Single Phase Online UPS with Built-In Battery - 6KVA	

POOLSBROOK

1 KVA SINGLE PHASE RACK MOUNT / TOWER ONLINE UPS WITH BUILT-IN BATTERY



CODE	DESCRIPTION	FEATURES
PS-221502	POOLSBROOK 1KVA Single Phase Rack Mount / Tower Online UPS with Built-In Battery	<ul style="list-style-type: none"> True double conversion UPS providing power to fully protect mission critical devices such as sensitive networks, small computer centres, servers and telecommunication applications

GRASSMOOR

PORTABLE ELECTRIC CAR CHARGER



CODE	DESCRIPTION	FEATURES
PS-211301	GRASSMOOR Portable Electric Car Charger	<ul style="list-style-type: none"> Plugs directly into a UK 3-pin power socket LED indicator and LCD display High quality PC and anti-UV Charging status indicator IEC 62196-2 charging plug and 4.5M cable Current leakage protection Portable, plug and play

HIGHFIELD

ELECTRIC CAR CHARGER

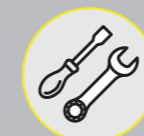


CODE	DESCRIPTION	FEATURES
PS-211401	HIGHFIELD Electric Car Charger with LCD Screen – Commercial Use	<ul style="list-style-type: none"> IEC 62196-2 compliant type 2 plug with a 5M cable Pure PC material Anti-UV treatment IK08 and IP54 enclosure 32A to 16A by switch, 32A to 6A by TCP server
PS-211402	HIGHFIELD Electric Car Charger – Residential Use	

FULL TURNKEY SOLUTION



Design



Manufacture



Supply



Installation



Commissioning



Servicing

WE OFFER A FULL TURNKEY SOLUTION

At BLE, we take pride in manufacturing high quality products by adhering to the highest standards and conducting rigorous in-house testing. We collaborate closely with our clients throughout every stage of the project, from initial design to on-site installation and commissioning. Our adaptable product line-up caters to the unique requirements of each customer and project.

No matter if it's a refurbishment, upgrade, or new construction, our seasoned team of sales and technical experts work hand-in-hand with clients to develop designs and solutions that perfectly suit their needs while ensuring seamless system maintenance throughout its lifespan.

Countless sectors rely on BLE for dependable emergency lighting and back-up power solutions. Our extensive experience covers a wide range of industries, including:

- Airports
- Universities
- Council Buildings
- MOD Facilities
- Cinemas
- Rail Infrastructure
- Sports Stadiums
- Retail
- Hospitality Venues
- Hospitals
- Production Facilities



Our adaptable product line-up caters to the unique requirements of each customer and project.

